



# HOW TO COLLECT A URINE SAMPLE FROM YOUR CAT

*It's as easy as 1, 2, Pee!*

## 1. PREP YOUR LITTERBOX



Collecting a urine sample from your feline friend is much easier (and cleaner!) than collecting it from a dog. First, you'll want to get your litterbox ready. Depending on the type of litterbox you own, it may be easiest to pick up a simple, plastic box from your local pet store. Make sure the litterbox is clean, dry, and empty.

## 2. ADD NON-ABSORBENT LITTER



Once the litterbox is clean and ready to go, add the non-absorbent litter material your veterinarian gave you to your box. Our kitty friends like to have something in there to shuffle around when they use the toilet, so this is key.

## 3. BINGE-WATCH YOUR FAVORITE SHOW



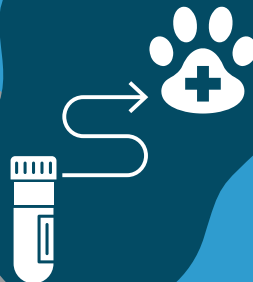
It's time for everyone's favorite step: waiting. Go ahead and stream your favorite show or do the laundry you've been putting off all week. Just be sure to intermittently check the litterbox for fresh urine.

## 4. COLLECT URINE



Use the provided pipette to transfer the urine from the litterbox to the urine sample tube. Once collected, you can dispose of the non-absorbent litter remaining in the box. Place the urine sample tube in a ziplock bag. If no pipette was provided the sample can be returned in original container. Please make sure lid is properly secured.

## 5. DROP THAT LIQUID GOLD OFF WITH US!



Final Step: bring your pet's urine to us. If you can't head right to our office with that fresh sample, please be sure to put it in the refrigerator and keep it there until you can head on over. Be sure to drop it off within 24 hours of collection. Great job!



## **WHY IS TESTING YOUR PET'S URINE SO IMPORTANT?**



### **URINE HELPS COMPLETE THE PICTURE OF HEALTH**

*Your pet's urine sample tells a story! It gives your veterinarian information about how healthy your pet is and can help us catch something early before damage can occur, even if there are only minor changes in your pet's urine results (pretty cool, right?).*

### **WHAT DOES URINE TELL US, EXACTLY?**

*Urine can tell us how your pet's kidneys and urinary tract are functioning. It can even tell us if your pet might be prone to developing diabetes or kidney disease. Have you ever worried about possible infection? The presence of bacteria and/or white blood cells can also tell us that, too! Not to mention, certain types of bladder cells can also give us clues as to potential cancers invading the upper and lower urinary system of your furry friend.*

### **WHY DO WE NEED TO CHECK YOUR PET'S URINE NOW WHEN THEY'RE HEALTHY? DON'T WE REALLY ONLY NEED TO CHECK IF A PET IS SICK?**

*This is a great and important question! Pets have a natural tendency to hide their symptoms if they are feeling sick. This is something ingrained in them as a defense mechanism against predators. Often times, a pet might be sick and give no indications. If we wait until symptoms occur, then treatment will often be more complicated and stressful on you and your pet. In order to safeguard your pet from possible health concerns and give them the best life possible, we recommend routine annual blood work with urine & fecal testing as a part of your pet's preventive care.*